

The Avantis 550 Series French Door Lock

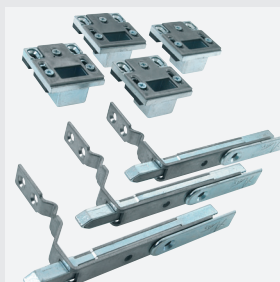
High performance multipoint door locking system

The largest chamfered hooks in the UK market, an exclusive chamfered centre compression bolt, optional roller cams and laminated security shoot bolts, all locking into fully adjustable keeps, combine to offer both a formidable defence against forced entry and class leading weather proofing.

Specially located auxiliary locking points ensure similar minimum and maximum sash rebates as the Avantis single door locks and continuity throughout the range.

Features

- ✓ 25mm deep throw Direct drive centre compression deadbolt
- ✓ Largest opposing chamfered security hooks in the UK
- ✓ Optional roller cams for additional compression
- ✓ Front and back door functionality in one lock
- ✓ Exclusive 'Twin-Fix' cylinder guard
- ✓ Fully adjustable individual and one piece security keeps
- ✓ High security shoot bolts and adjustable shoot bolt keeps
- ✓ Secured by Design accredited
- ✓ 10 year mechanical guarantee



Technical specifications

- ✓ 16mm faceplate
- ✓ 35mm back set
- ✓ PZ92/62mm dual follower centre case
- ✓ Tested to PAS24 and BS6375
- ✓ Corrosion resistance to EN1670: Grade 4 (240 hours NSS)
- ✓ Sash rebates min 1852mm (1688mm with reduced handle height), max 2200mm
- ✓ Service life of over 50,000 cycles



Part Number	Description	Faceplate material	Roller cams
DLM1-550-HS-MS	550 series French door hook lock, 35mm back set	mild steel	0
DLM1-550-HS-SS	550 series French door hook lock, 35mm back set	stainless steel	0
DLM1-552-HS-MS	550 series French door hook lock, 35mm back set	mild steel	2
DLM1-552-HS-SS	550 series French door hook lock, 35mm back set	stainless steel	2
DLM1-CC-HS-MS	French door slave lock, 35mm back set	mild steel	-
DLM1-CC-HS-SS	French door slave lock, 35mm back set	stainless steel	-
DLSB-005-MS	Top / Bottom Shoot Bolt	mild steel	-
DLSB-005-SS	Top / Bottom Shoot Bolt	stainless steel	-

